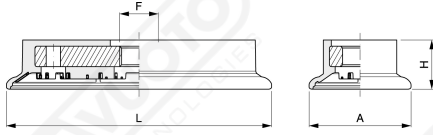
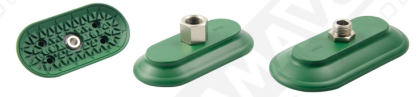
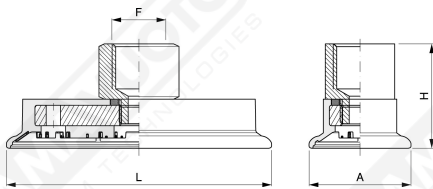


## Flache ovale Elastobrake Saugnapfe



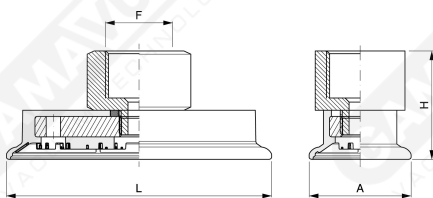
**Art. VTOSA 53 ÷ 145**

Art.	L	A	F	H
<b>VTOSA 53</b>	53	18	1/8"	19.5
<b>VTOSA 65</b>	65	25	1/8"	12
<b>VTOSA 85</b>	85	42	1/8"	14
<b>VTOSA 95</b>	95	35	1/8"	12.7
<b>VTOSA 105</b>	105	52	1/4"	15.7
<b>VTOSA 123</b>	123	60	1/4"	18
<b>VTOSA 145</b>	145	72	1/4"	19



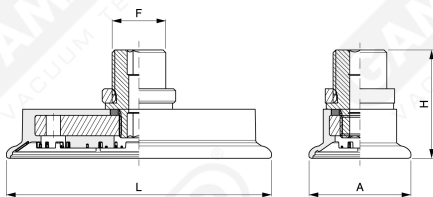
**Art. VTOSB 53 ÷ 145**

Art.	L	A	F	H
<b>VTOSB 53</b>	53	18	1/4"	33
<b>VTOSB 65</b>	65	25	1/4"	25.5
<b>VTOSB 85</b>	85	42	1/4"	27.5
<b>VTOSB 95</b>	95	35	1/4"	26.2
<b>VTOSB 105</b>	105	52	1/4"	29.3
<b>VTOSB 123</b>	123	60	1/4"	31.6
<b>VTOSB 145</b>	145	72	1/4"	32.6



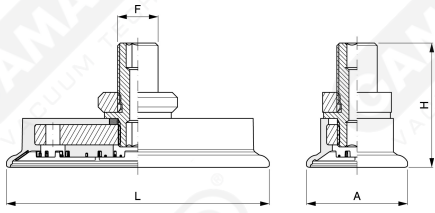
**Art. VTOSC 53 ÷ 145**

Art.	L	A	F	H
<b>VTOSC 53</b>	53	18	3/8"	34
<b>VTOSC 65</b>	65	25	3/8"	26.5
<b>VTOSC 85</b>	85	42	3/8"	28.5
<b>VTOSC 95</b>	95	35	3/8"	27.2
<b>VTOSC 105</b>	105	52	3/8"	30.2
<b>VTOSC 123</b>	123	60	3/8"	32.5
<b>VTOSC 145</b>	145	72	3/8"	33.5



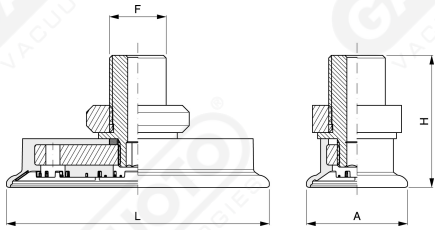
**Art. VTOSD 53 ÷ 145**

Art.	L	A	F	H
<b>VTOSD 53</b>	53	18	1/4"	34
<b>VTOSD 65</b>	65	25	1/4"	26.5
<b>VTOSD 85</b>	85	42	1/4"	28.5
<b>VTOSD 95</b>	95	35	1/4"	27.2
<b>VTOSD 105</b>	105	52	1/4"	30.2
<b>VTOSD 123</b>	123	60	1/4"	32.5
<b>VTOSD 145</b>	145	72	1/4"	33.5



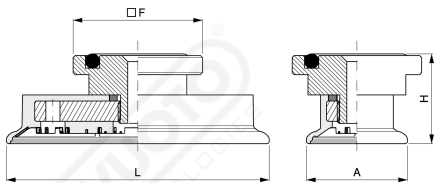
Art. VTOSE 53 ÷ 145

Art.	L	A	F	H
<b>VTOSE 53</b>	53	18	M10x1.5	38
<b>VTOSE 65</b>	65	25	M10x1.5	30.5
<b>VTOSE 85</b>	85	42	M10x1.5	32.5
<b>VTOSE 95</b>	95	35	M10x1.5	31.2
<b>VTOSE 105</b>	105	52	M10x1.5	34.2
<b>VTOSE 123</b>	123	60	M10x1.5	36.5
<b>VTOSE 145</b>	145	72	M10x1.5	37.5



Art. VTOSF 53 ÷ 145

Art.	L	A	F	H
<b>VTOSF 53</b>	53	18	M14x1.5	40
<b>VTOSF 65</b>	65	25	M14x1.5	32.5
<b>VTOSF 85</b>	85	42	M14x1.5	34.5
<b>VTOSF 95</b>	95	35	M14x1.5	33.2
<b>VTOSF 105</b>	105	52	M14x1.5	36.2
<b>VTOSF 123</b>	123	60	M14x1.5	38.5
<b>VTOSF 145</b>	145	72	M14x1.5	39.5



Art. VTOSG 53 ÷ 145

Art.	L	A	F	H
<b>VTOSG 53</b>	53	18	32	29.6
<b>VTOSG 65</b>	65	25	32	22.1
<b>VTOSG 85</b>	85	42	32	24.1
<b>VTOSG 95</b>	95	35	32	22.8
<b>VTOSG 105</b>	105	52	32	25.8
<b>VTOSG 123</b>	123	60	32	28.1
<b>VTOSG 145</b>	145	72	32	29.1