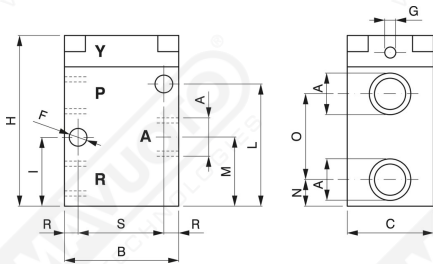




Vacuum valves with pneumatic control

The 2 or 3-way position valves are useable N.O. or N.C.

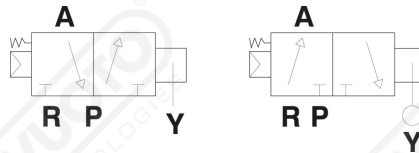
- Valve body : painted aluminium
- Spring: harmonic steel
- Gaskets: Viton
- Fluid temperature: -5°C + 60°C



Art.	AØ	Orif. Ø	B	C	FØ	GØ	H	I	L	M	N	O	R	S	Capacity m ³ /h
EPP 1/4"	1/4"	8	58.5	32	4.5	1/8"	79	35.5	47	36	24	23	10	40	5
EPP 1/2"	1/2"	15	70	35	6.5	1/8"	87	33	51	33	16	34	10	50	20
EPP 3/4"	3/4"	19	80	50	8.5	1/8"	118	43	83	51	21	58	10	60	35
EPP 1"	1"	25	80	50	8.5	1/8"	118	43	83	51	21	58	10	60	90

Art. EPP

* A 755 mm Hg The 3 way vacuum valves can operate as 2 way systems, with the use of a plug.



Art. EPP

NC
P OUTLET
R USE
A PUMP
Y AIR CONTROL 3:8 bar

NO
P PUMP
R USE
A OUTLET
Y AIR CONTROL 3:8 bar